



**ADDENDUM NO. 6**

**DATE:** April 26, 2024

**TO:** ALL PROSPECTIVE BIDDERS

**SUBJECT:** Solicitation No. AA018B

**TITLE:** Miami International Airport (MIA) South Terminal Concourse H Rehabilitation – Phase 1

**REVISION:** Answer No. 2 for Question No. 2 in Addendum No. 4 is hereby replaced with the following:

Question No. 2      The curtain walls framing require a vertical tube steel column where the two curtain walls meet at the 90 degrees return to the building. The drawings have not designed, engineered, and sized these steel columns, they are not part of the curtain wall system. Please provide the engineering for these steel tube columns including all required top and bottom connection to the existing structure. Without this information we will not be able to include the cost of these steel columns in our bid.

**Answer No. 2:**      Refer to Attachment 1 under Addendum No. 6.

**All other information remains the same.**

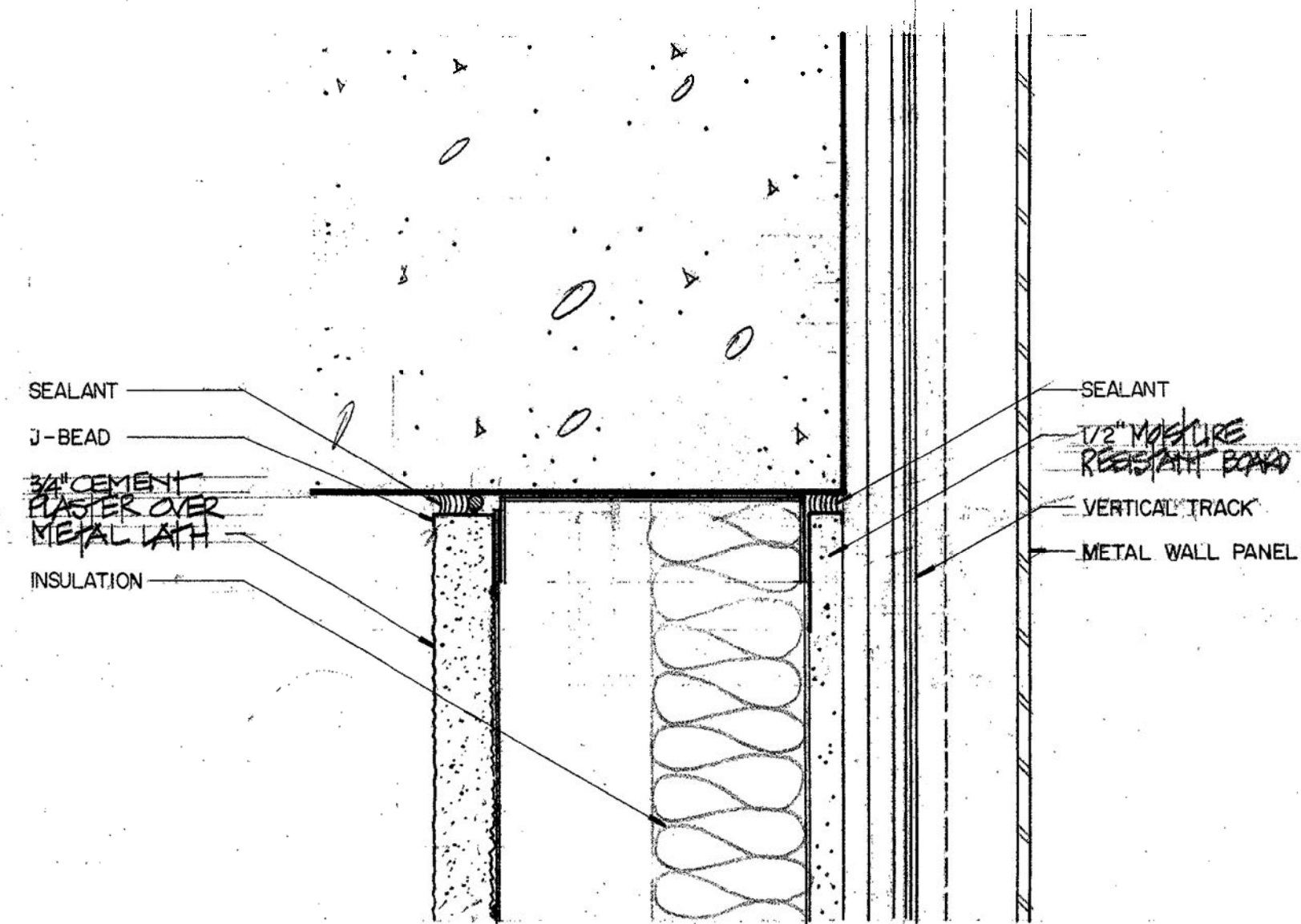
Miami-Dade County,

Claudia Portocarrero  
Aviation Senior Procurement Contracting Officer

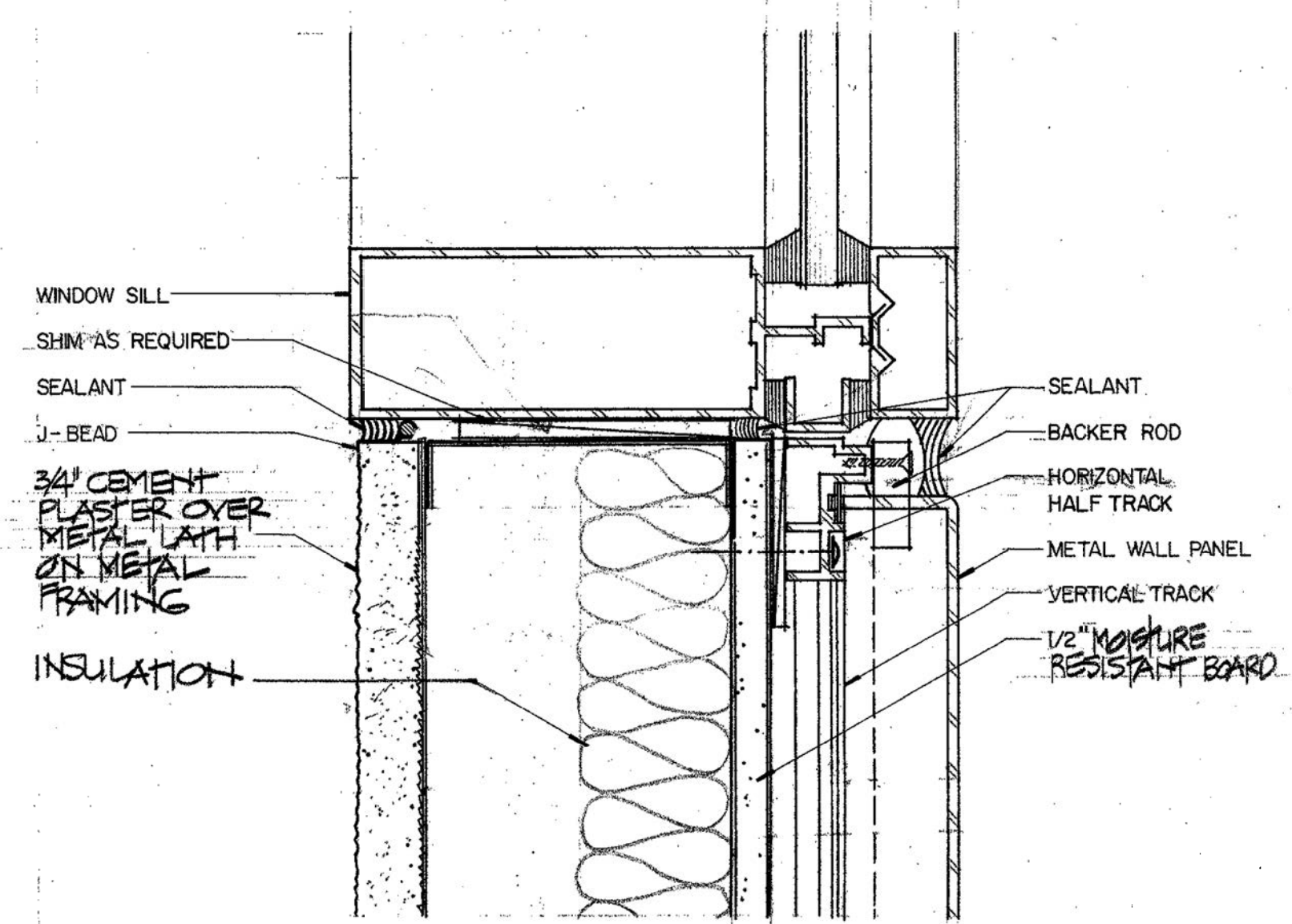
c: Clerk of the Board

# ADDENDUM No. 6

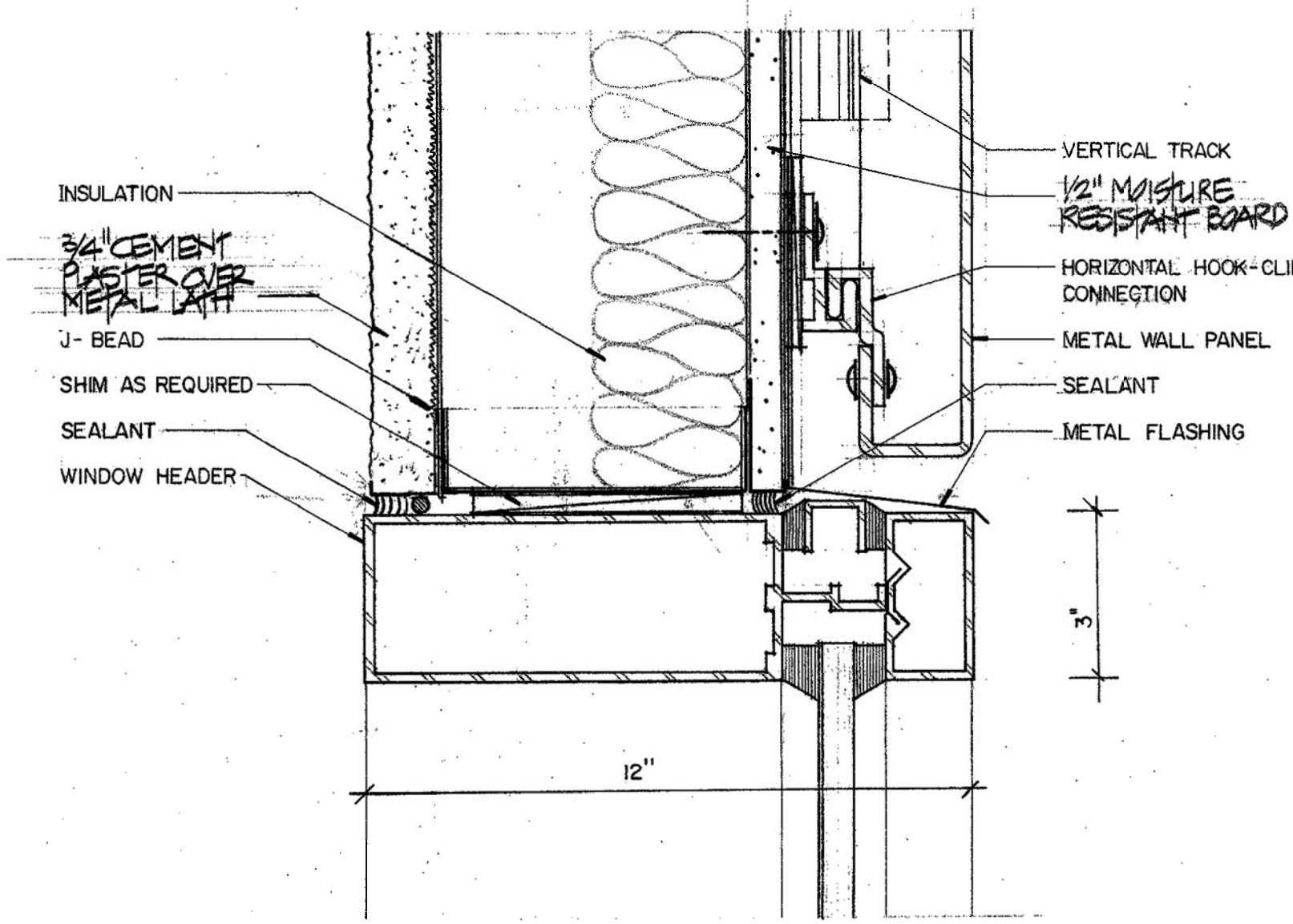
## ATTACHMENT 1 - Drawing



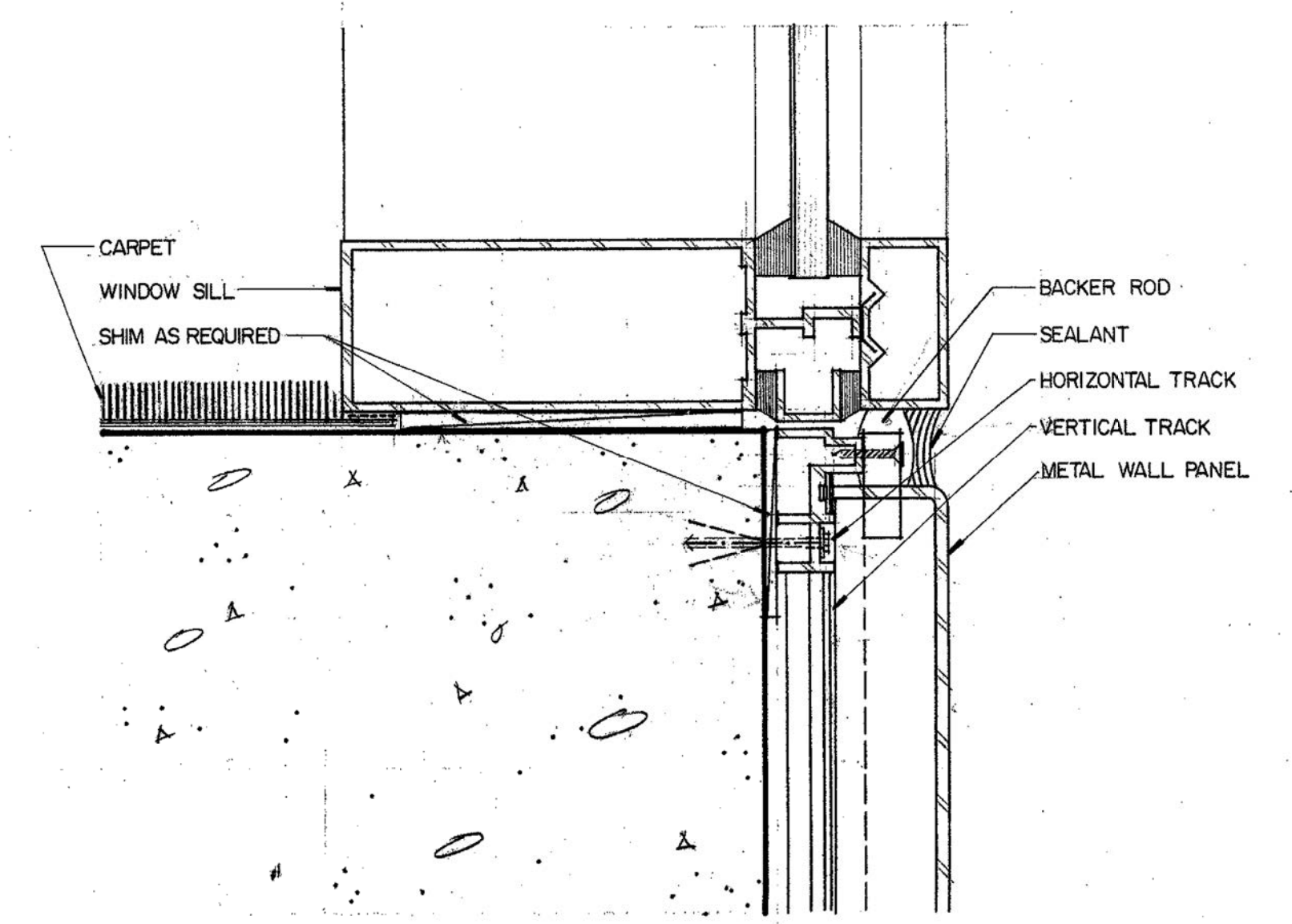
4  
A-78  
**DETAIL**  
HALF SCALE



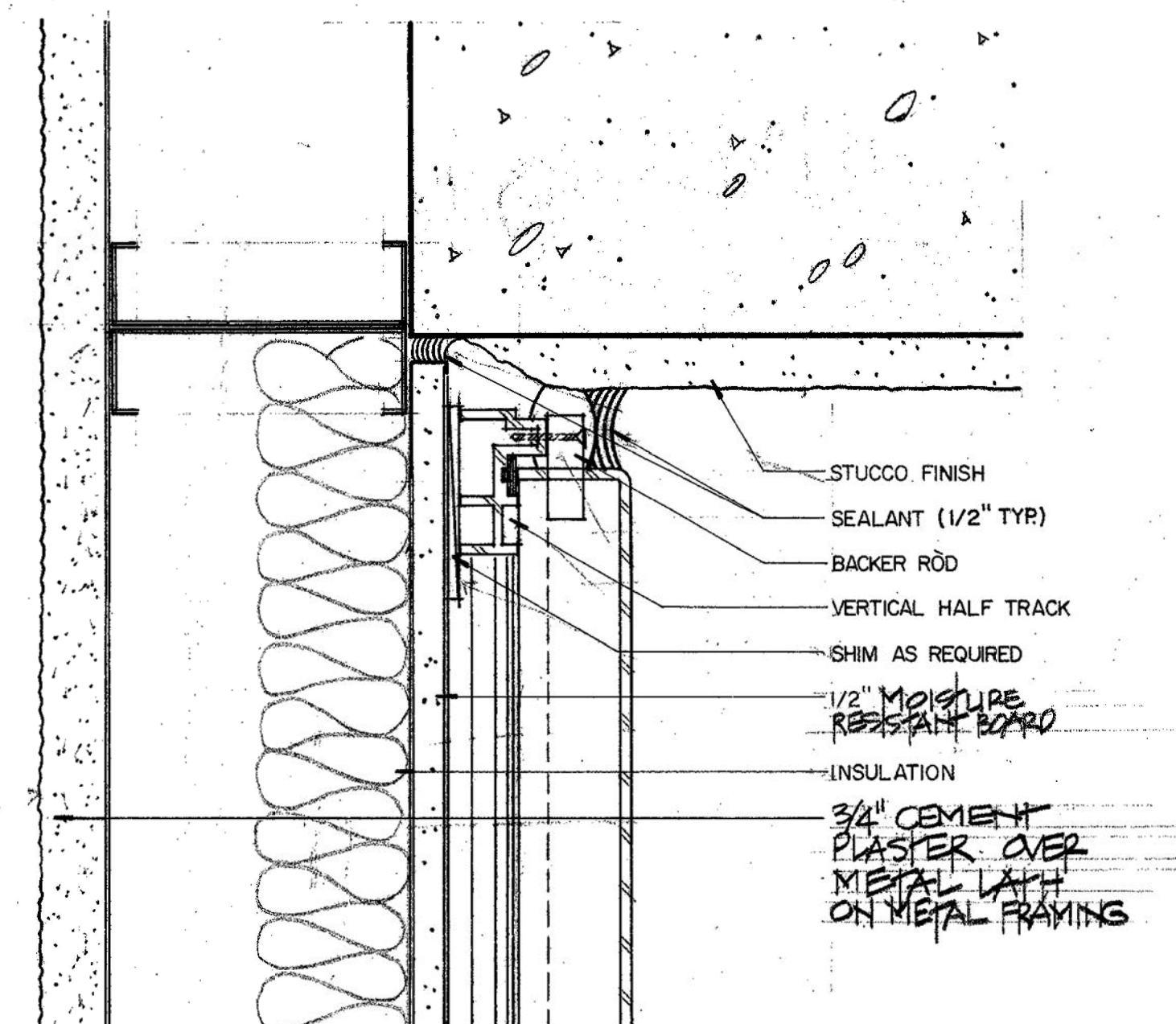
3  
A-78  
**DETAIL**  
HALF SCALE



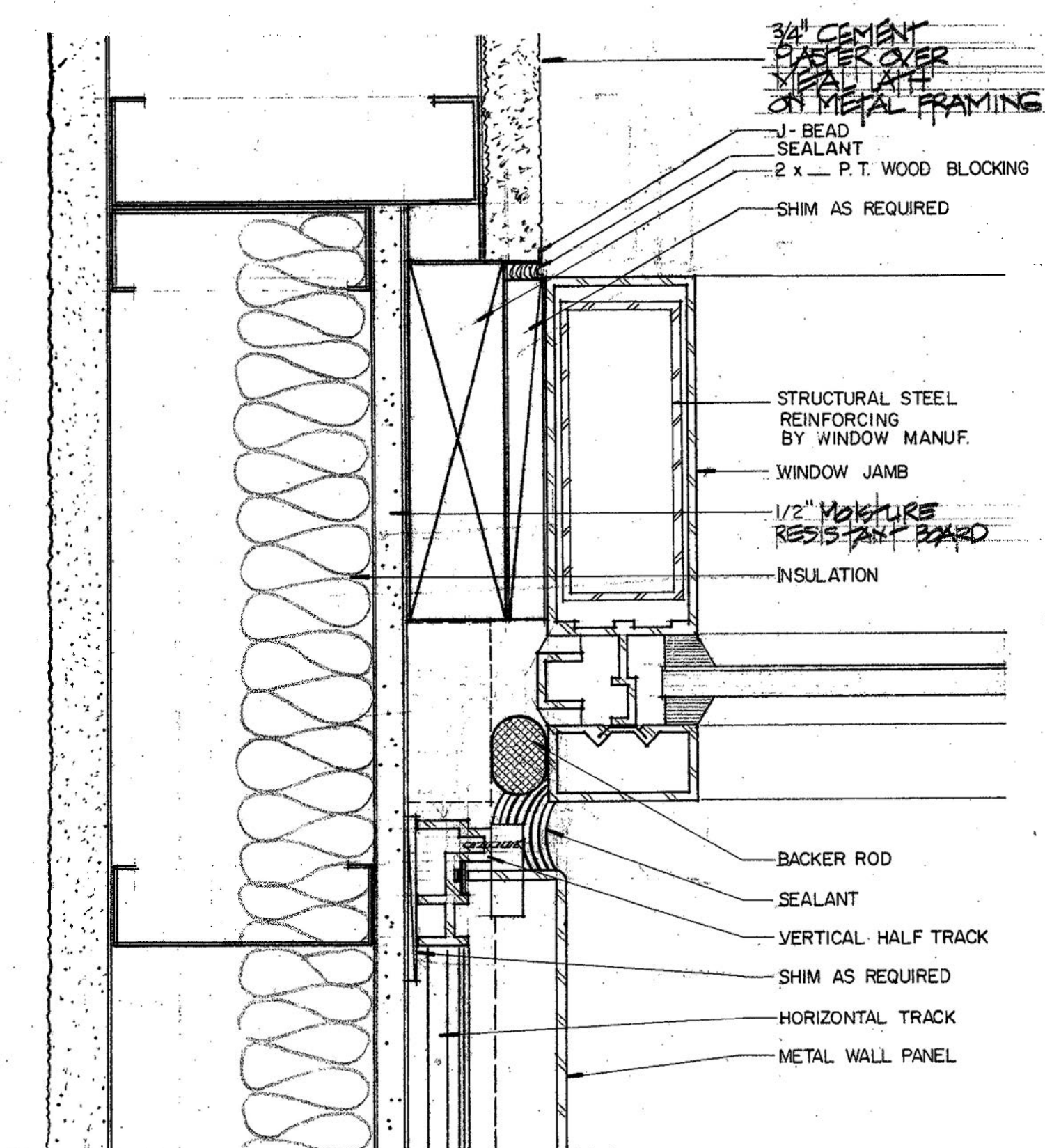
2  
A-78  
**DETAIL**  
HALF SCALE



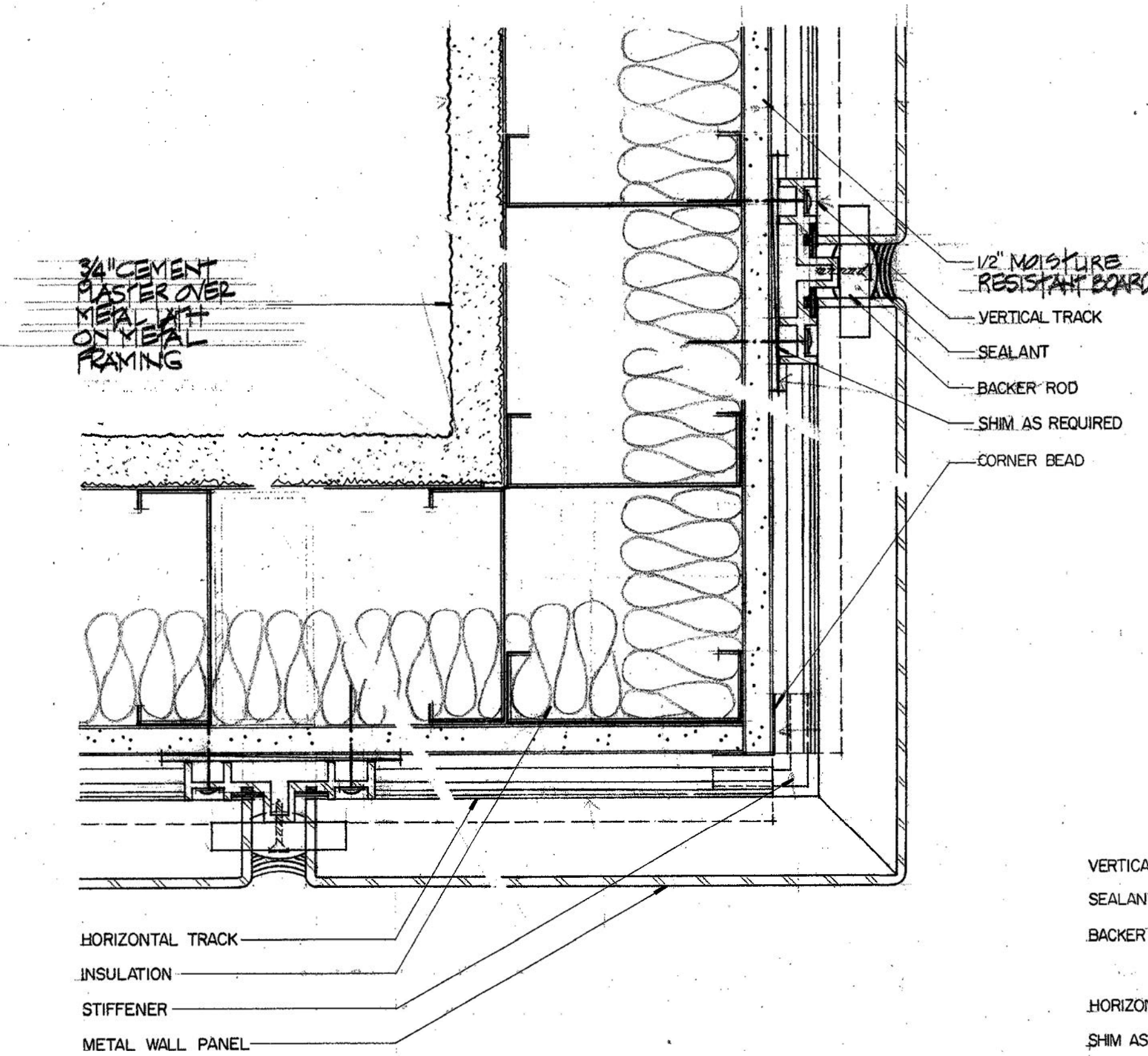
1  
A-78  
**DETAIL**  
HALF SCALE



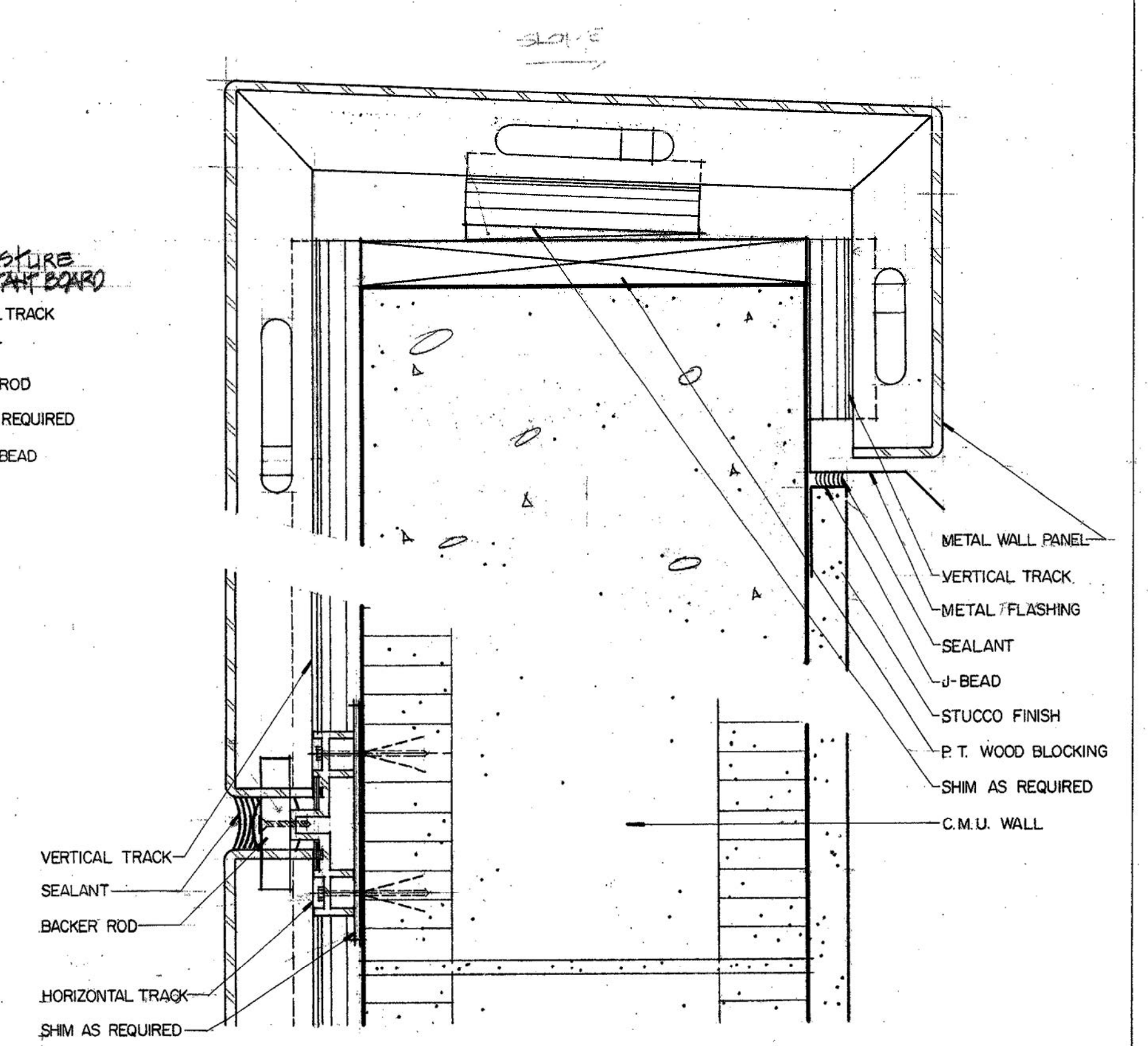
8  
A-78  
**DETAIL**  
HALF SCALE



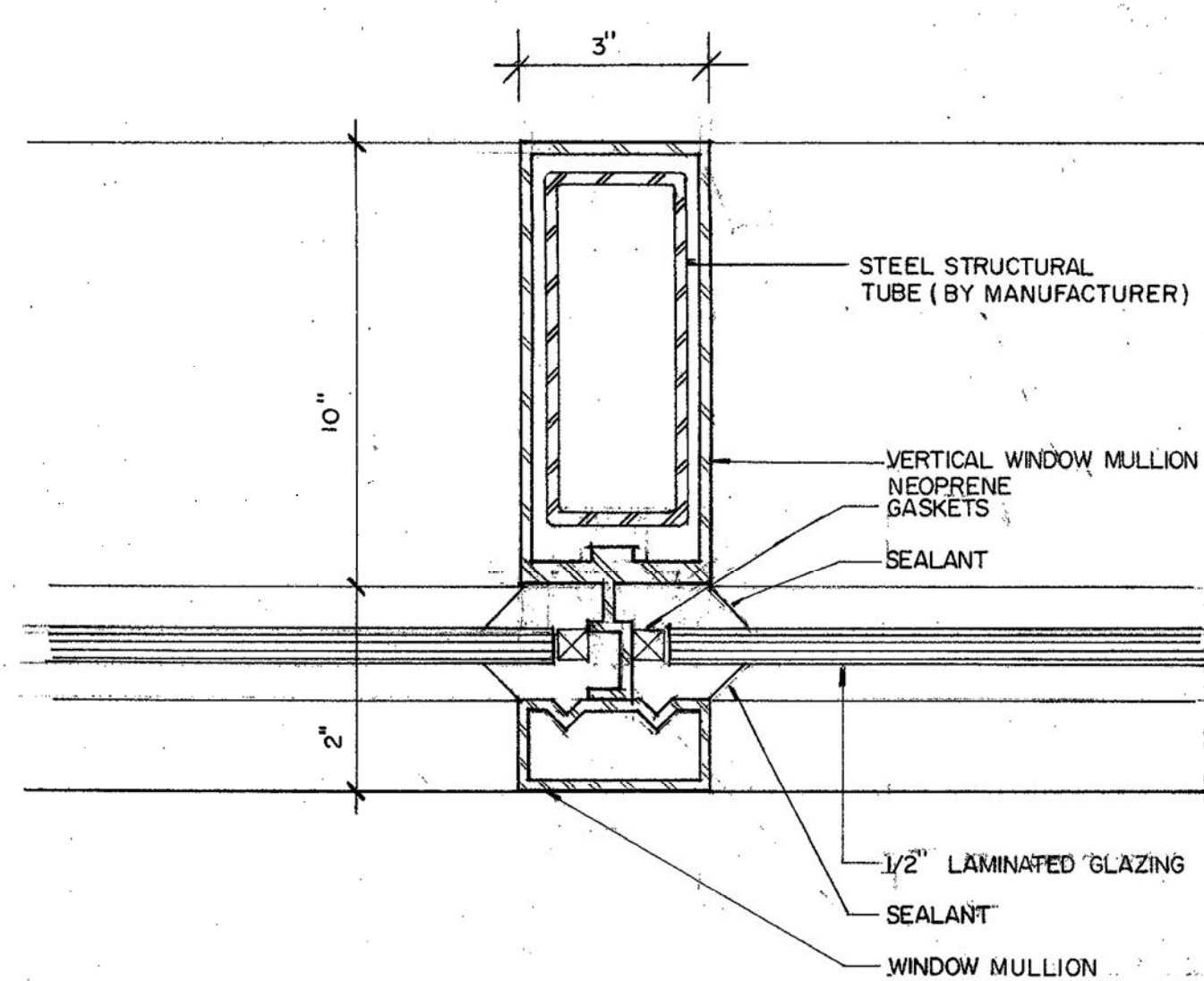
7  
A-78  
**DETAIL**  
HALF SCALE



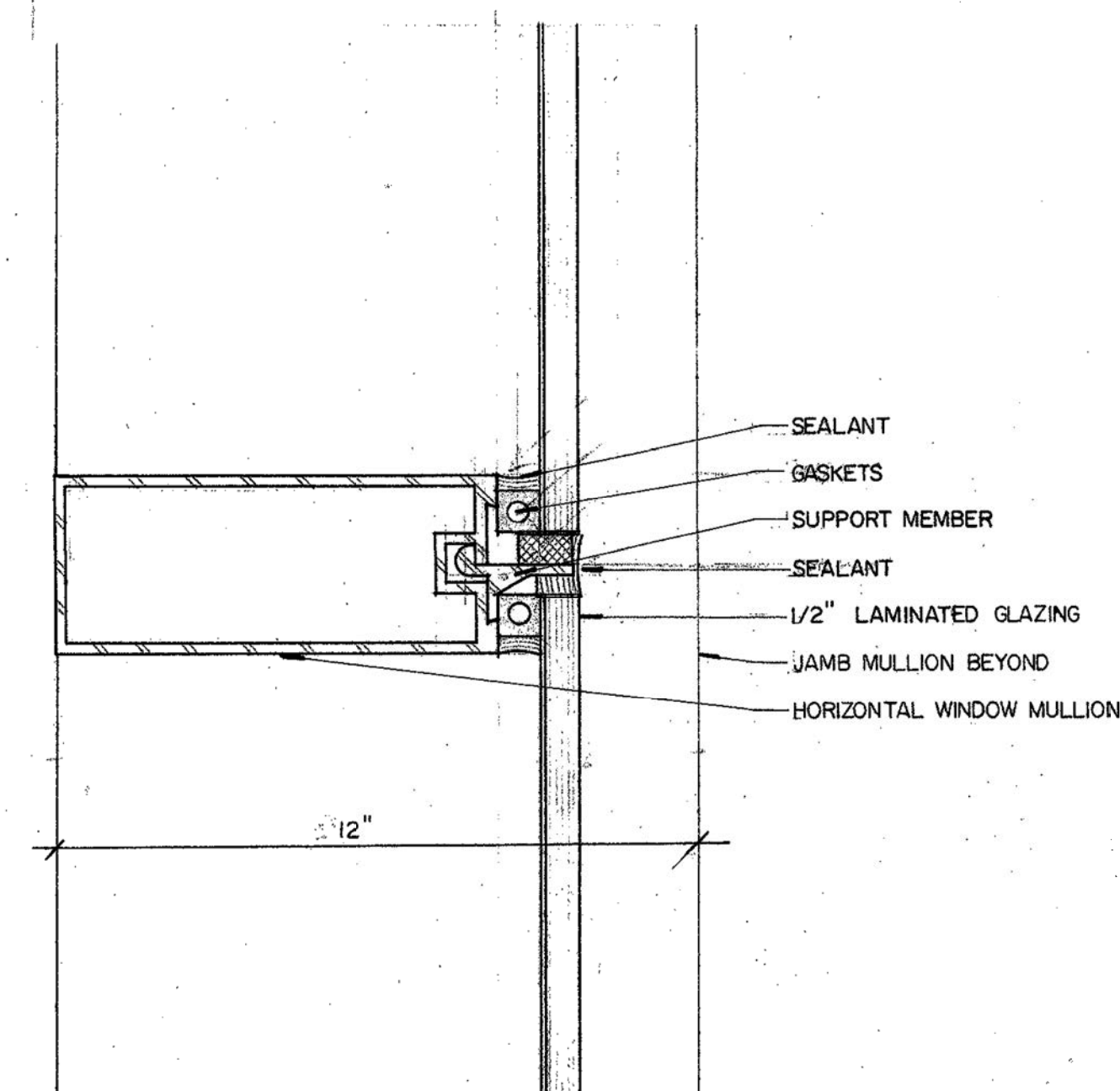
6  
A-78  
**DETAIL**  
HALF SCALE



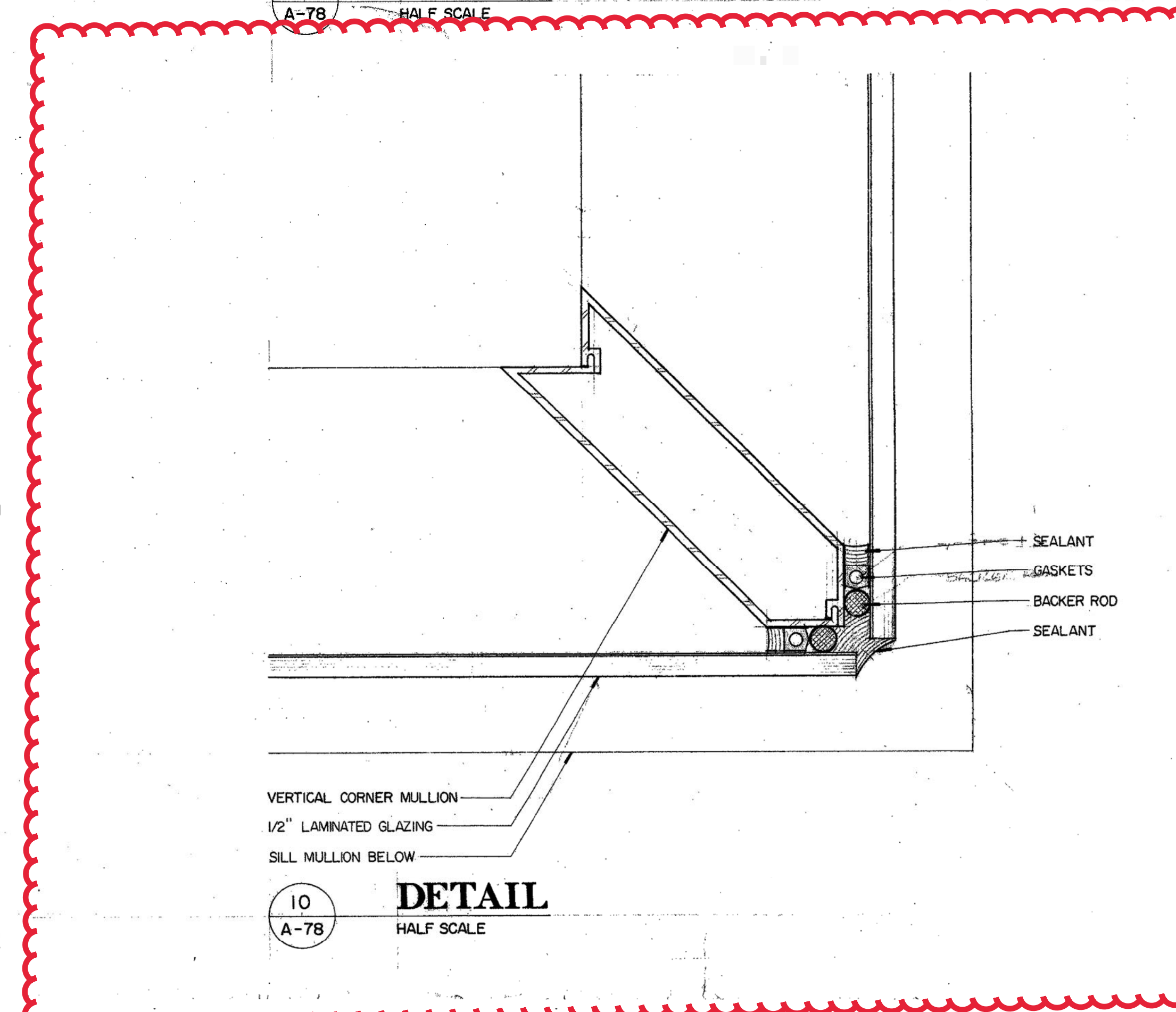
5  
A-78  
**DETAIL**  
HALF SCALE



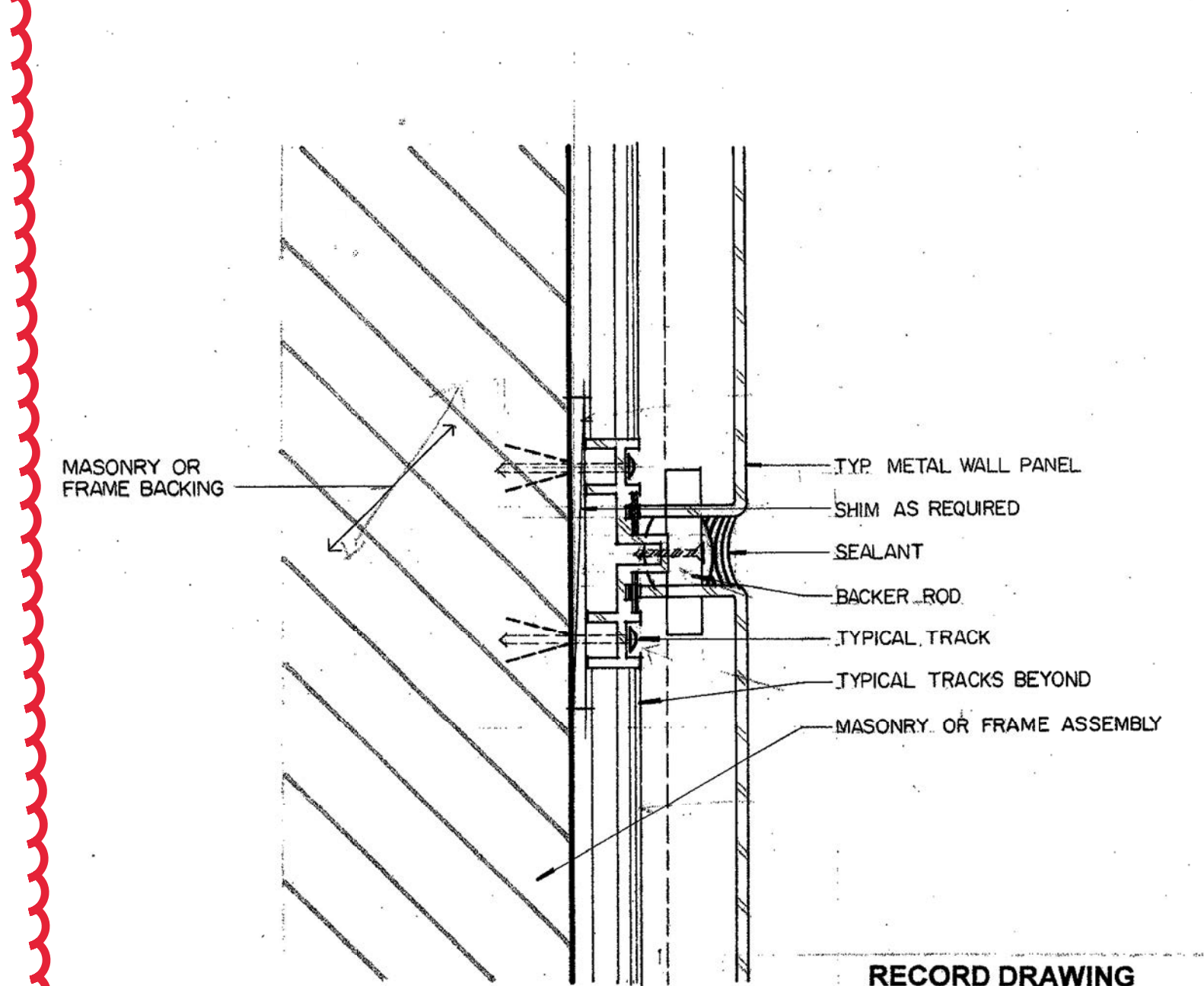
12  
A-78  
**DETAIL**  
HALF SCALE



11  
A-78  
**DETAIL**  
HALF SCALE



10  
A-78  
**DETAIL**  
HALF SCALE



9  
A-78  
**DETAIL**  
HALF SCALE

**RECORD DRAWING**  
THIS DRAWING CONTAINS AS-BUILT INFORMATION RECORDED IN FIELD BY CENTEX ROONEY INC. GENERAL CONTRACTORS AS MARKED ON PRINTS OF CONSTRUCTION DRAWINGS UNDER D.C.A.D. CONTRACT 90038H32-1 BY PEREZ & PEREZ ARCHITECTS PLANNERS, INC.

| REVISIONS  |           |
|------------|-----------|
| Date:      | 12-03-91  |
| Issued:    | 05-04-92  |
| Drawn:     | M.TOJEIRO |
| Checked:   | D.PEREZ   |
| Proj. No.: | 91P&P531  |