

TENANT NAME

REVISION
May 30, 2007



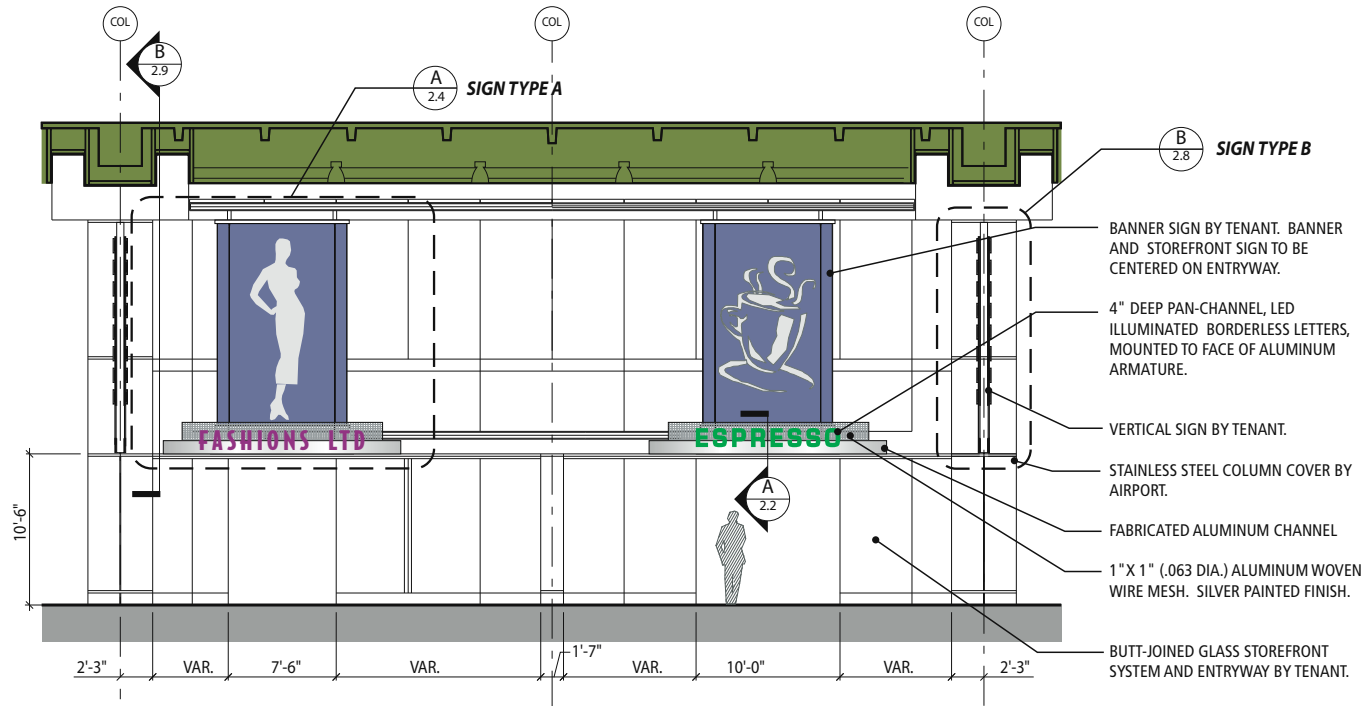
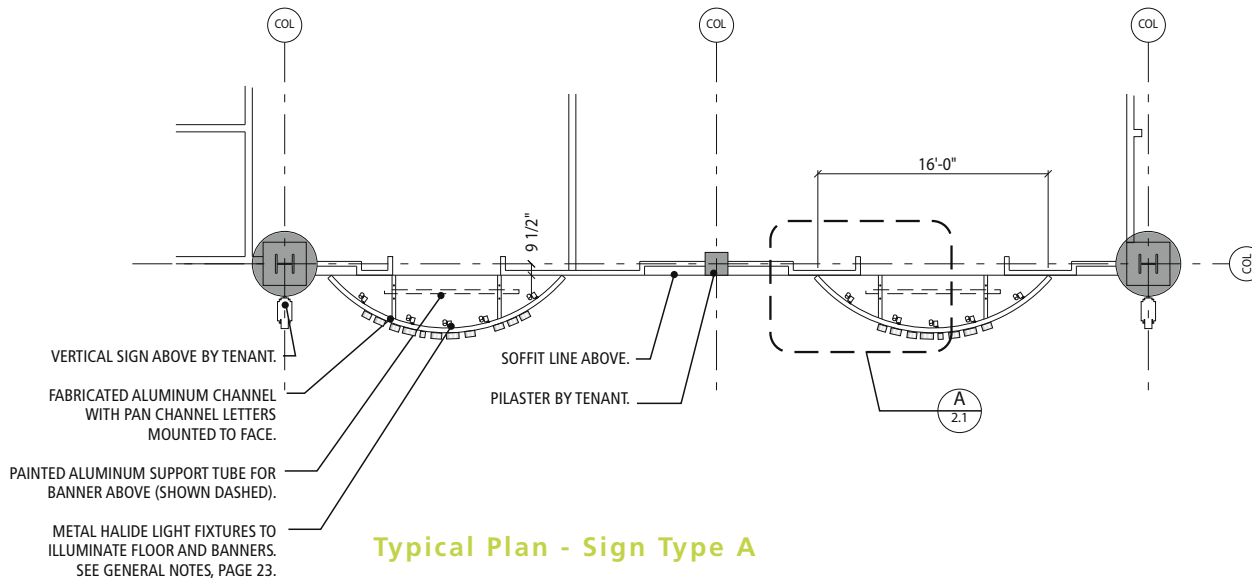
MIAMI INTERNATIONAL AIRPORT

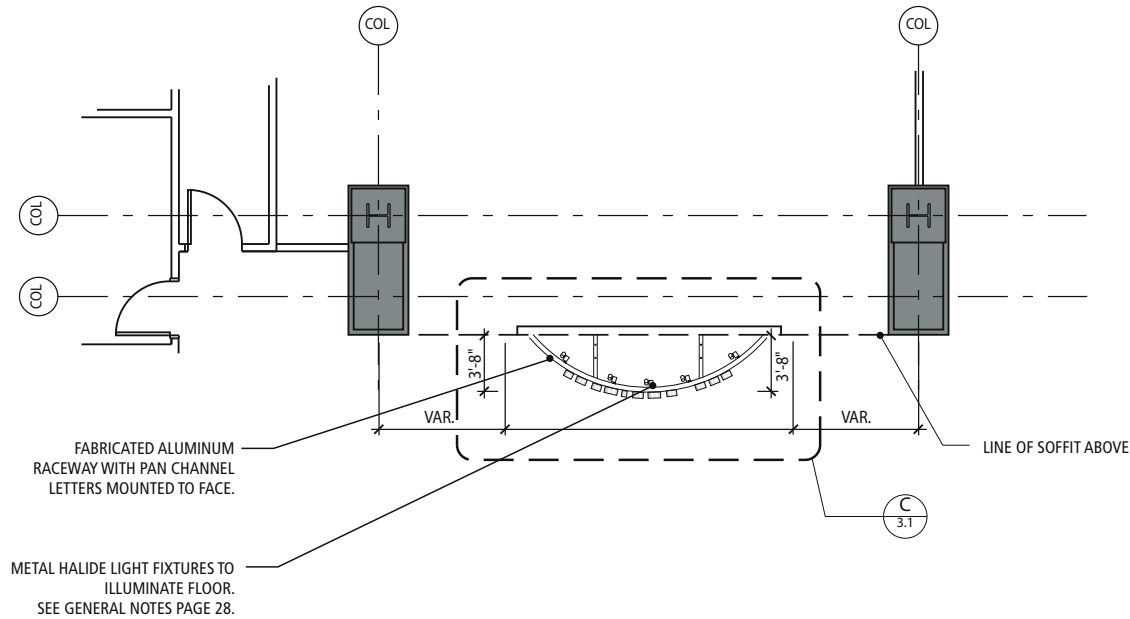
OCTOBER 5, 2005

north terminal

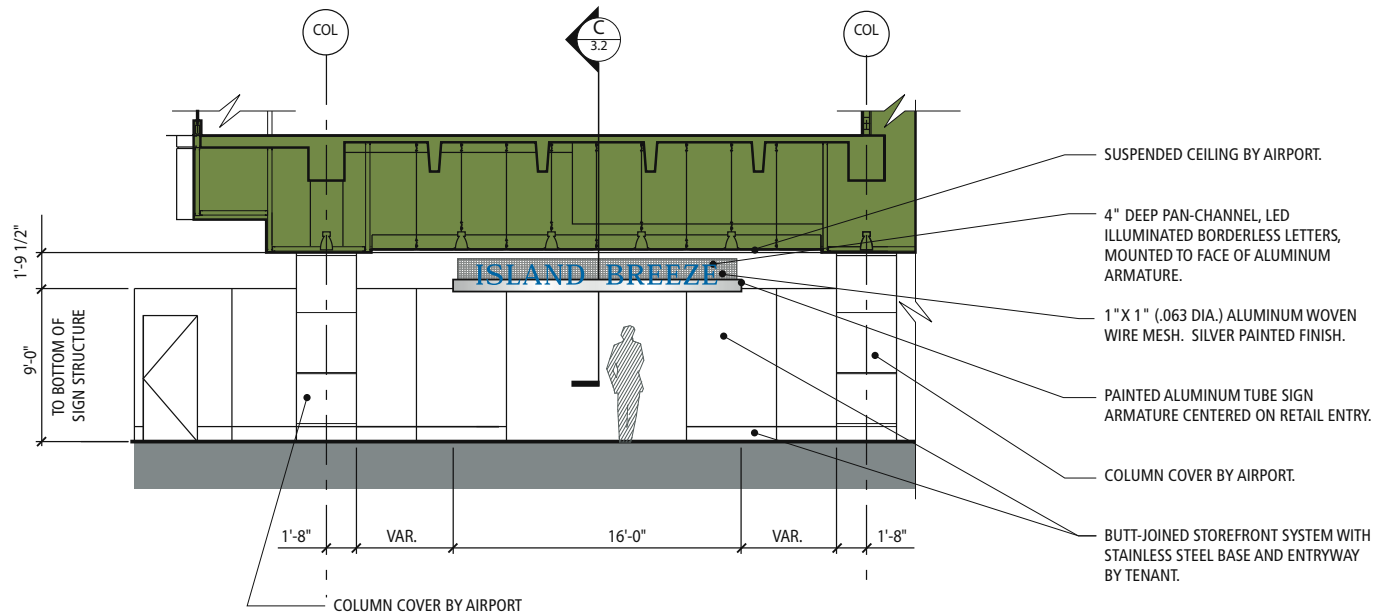
*Tenant
Signage
Criteria*

NORTH TERMINAL

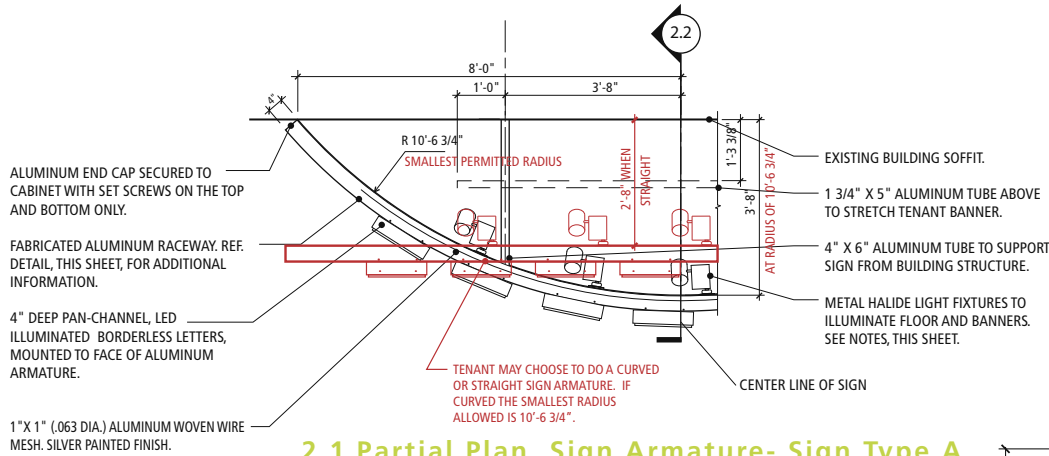




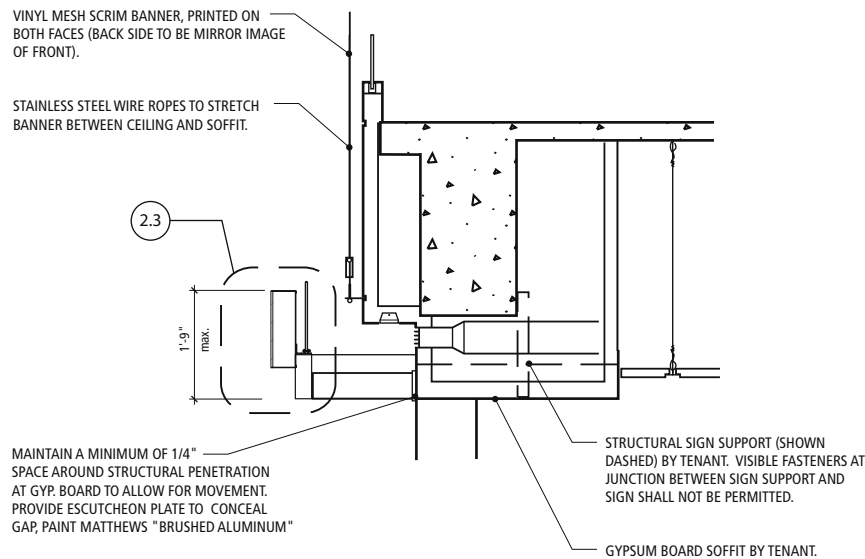
Typical Plan - Sign Type C



Typical Elevation - Sign Type C



2.1 Partial Plan, Sign Armature- Sign Type A

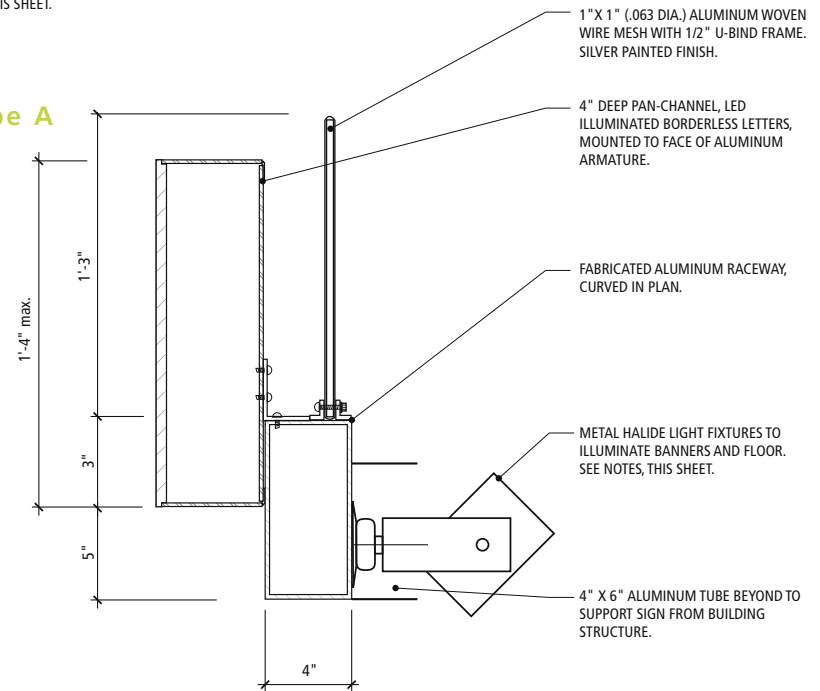


2.2 Sign Armature Section - Sign Type A

GENERAL NOTES

1. ALL EXPOSED OPAQUE SURFACES TO BE PAINTED MATTHEWS "BRUSHED ALUMINUM".
2. ACCESS PANELS SHALL BE PERMITTED ON REAR SURFACES ONLY AND MUST BE SET FLUSH WITH AND FINISHED TO MATCH SURROUNDING MATERIAL.
3. BANNER AND FLOOR ILLUMINATION SOURCE SHALL BE ADJUSTABLE PAR 20 METAL HALIDE FIXTURES, IN A SILVER FINISH. PROVIDE FIVE FIXTURES PER SIGN: TWO DIRECTED AT SCRIM BANNER ABOVE, AND THREE DIRECTED AT FLOOR.
4. LIGHT FIXTURES MUST USE 35 WATT METAL HALIDE LAMPS, AND HAVE REMOVABLE COLORED GEL LENSES
5. ELECTRICAL SERVICE TO ALL SIGNS SHALL BE FROM THE TENANT'S ELECTRICAL PANEL.
6. ALL WIRE ROPE HARDWARE SHALL BE JAKOB INOX LINE OR APPROVED EQUAL.
7. ALL LETTER FACES ARE TO BE FLUSH WITH THE LETTER RETURNS, **NO TRIM CAP**. MAX. CAP. HEIGHT IS 16".

TO ALLOW TENANTS THE OPTION OF CASTING COLORED LIGHT ONTO THE FLOOR AT THEIR ENTRIES.



2.3 Section Detail - Sign Type A

NORTH TERMINAL

GENERAL NOTES

1. ALL EXPOSED OPAQUE SURFACES TO BE PAINTED MATTHEWS "BRUSHED ALUMINUM".
2. ACCESS PANELS SHALL BE PERMITTED ON REAR SURFACES ONLY AND MUST BE SET FLUSH WITH AND FINISHED TO MATCH SURROUNDING MATERIAL.
3. ELECTRICAL SERVICE TO ALL SIGNS SHALL BE FROM THE TENANT'S ELECTRICAL PANEL.
4. ALL WIRE ROPE HARDWARE SHALL BE JAKOB INOX LINE OR APPROVED EQUAL.
5. ALL STRUCTURAL CONNECTIONS TO BE ENGINEERED BY SIGN FABRICATOR AND COORDINATED WITH THE EXISTING AIRPORT DETAILING.
6. ALL LETTER FACES ARE TO BE FLUSH WITH THE LETTER RETURNS, **NO TRIM CAP**. MAX. CAP. HEIGHT IS 16".
7. FLOOR ILLUMINATION SOURCE TO BE 35 WATT PAR 20 METAL HALIDE FIXTURES IN A SILVER FINISH. THREE PER SIGN. FIXTURES MUST ALSO HAVE REMOVABLE COLORED GEL LENSES TO ALLOW TENANTS THE OPTION OF CASTING COLORED LIGHT ONTO THE FLOOR AT THEIR ENTRIES.

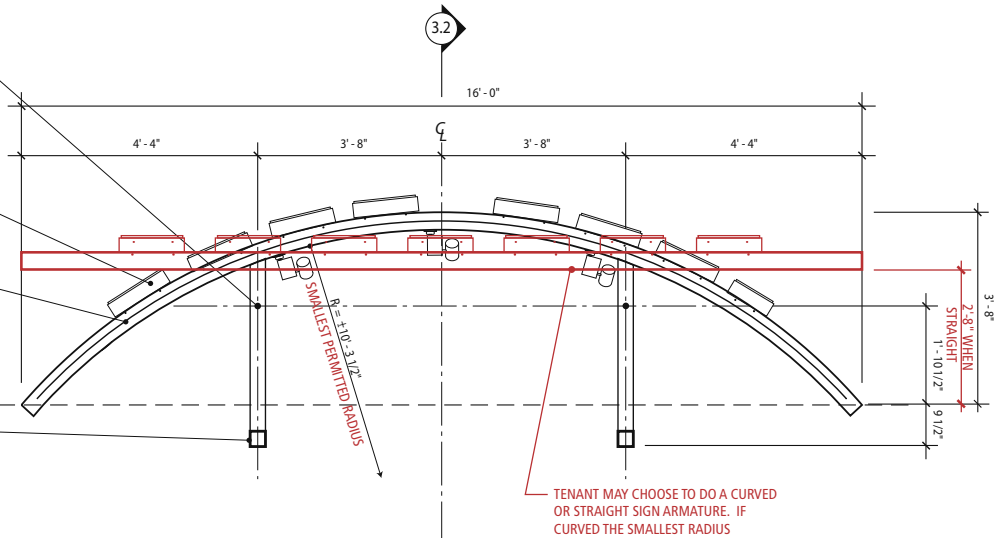
5 mm STAINLESS STL. CABLE TO STRUCTURE ABOVE. PROVIDE BRUSHED ALUM. ESCUTCHEON PLATE AT CEILING PENETRATION AND CUSTOM ANCHOR AT SIGN ARMATURE.

4" DEEP PAN-CHANNEL, LED ILLUMINATED BORDERLESS LETTERS, MOUNTED TO FACE OF ALUMINUM ARMATURE.

1" X 1" (.063 DIA.) ALUMINUM WOVEN WIRE MESH WITH 1/2" U-BIND FRAME. SILVER PAINTED FINISH.

EXISTING GYP. BOARD SOFFIT ABOVE.

3" SQ. ALUM. TUBE, PAINTED SILVER, OVER THREADED ROD SUPPORT. SUPPORT TO BE ANCHORED TO STRUCTURE ABOVE SOFFIT.



3.1 Plan - Sign Type C

5 mm STAINLESS STL. CABLE TO STRUCTURE ABOVE. PROVIDE BRUSHED ALUM. ESCUTCHEON PLATE AT CEILING PENETRATION.

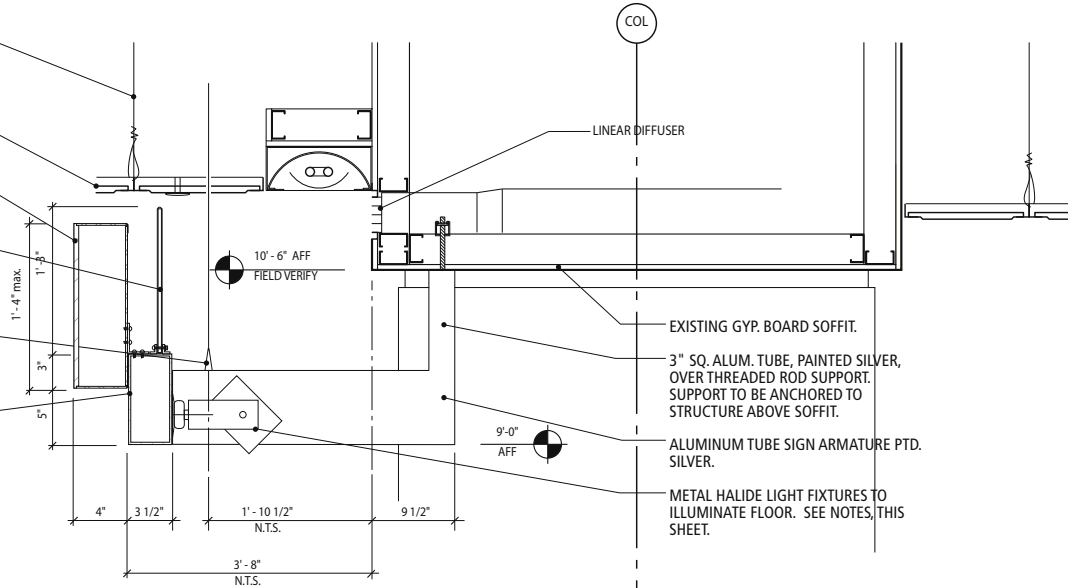
EXISTING LAY-IN CEILING.

4" DEEP PAN-CHANNEL, LED ILLUMINATED BORDERLESS LETTERS, MOUNTED TO FACE OF ALUMINUM ARMATURE.

1" X 1" (.063 DIA.) ALUMINUM WOVEN WIRE MESH WITH 1/2" U-BIND FRAME. SILVER PAINTED FINISH.

CUSTOM MILLED STRUCTURAL CONNECTOR TO MATCH APPEARANCE OF JAKOB INOX LINE ANCHOR #30803.

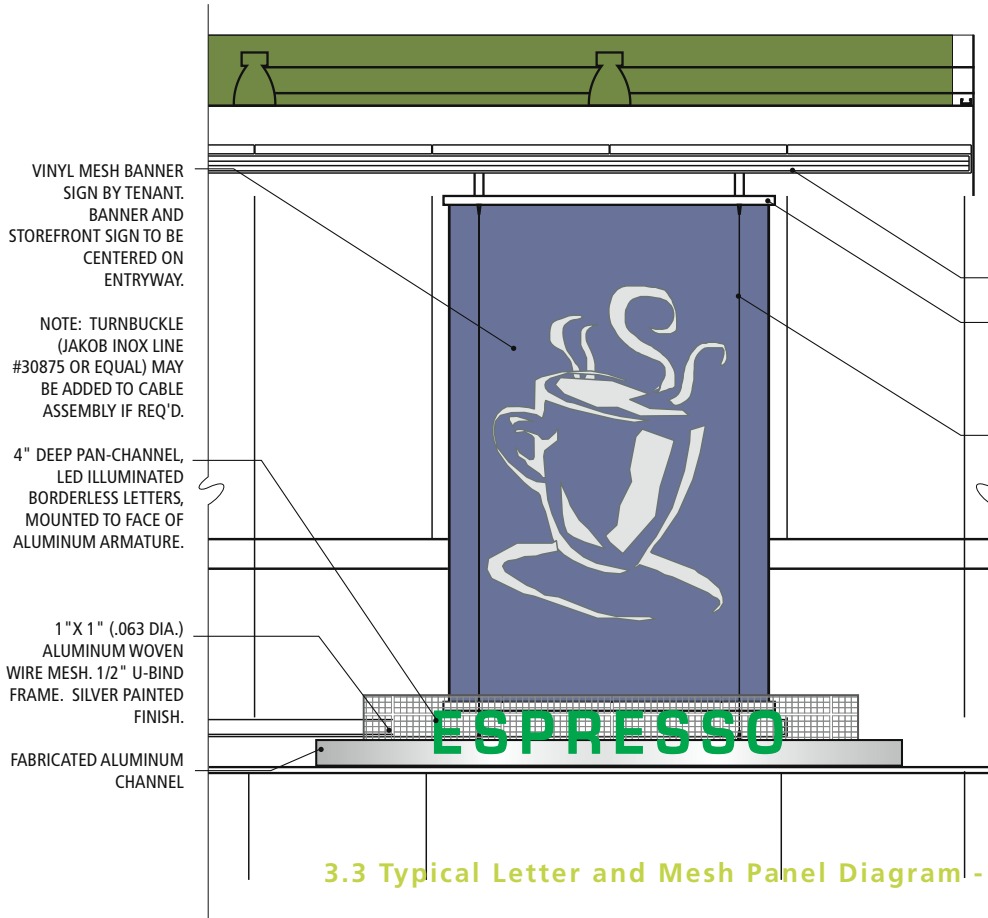
FABRICATED ALUMINUM RACE-WAY.



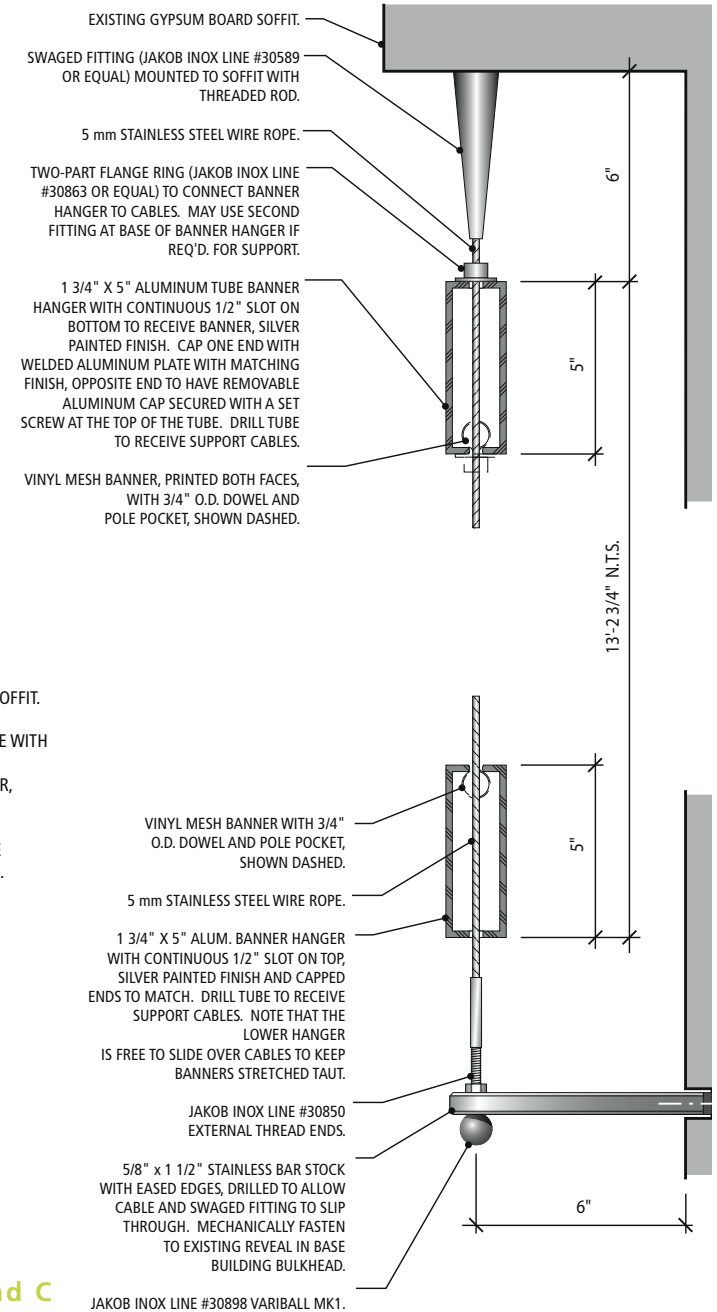
3.2 Section Detail - Sign Type C

GENERAL NOTES

1. ALL EXPOSED OPAQUE SURFACES NOTED AS "SILVER" TO BE PAINTED MATTHEWS "BRUSHED ALUMINUM".
2. BANNER IS TO BE 4 MIL VINYL MESH SCRIM MATERIAL PRINTED ON BOTH FACES. THE IMAGE ON THE BACK FACE OF THE BANNER IS TO BE PRINTED IN REVERSE SUCH THAT THE TWO IMAGES ARE REGISTERED WITHIN 1/4" OF EACH OTHER.
3. BANNER AND FLOOR ILLUMINATION SOURCE SHALL BE ADJUSTABLE PAR 20 METAL HALIDE FIXTURES, IN A SILVER FINISH. PROVIDE FIVE FIXTURES PER SIGN: TWO DIRECTED AT SCRIM BANNER ABOVE, AND THREE DIRECTED AT FLOOR.
4. LIGHT FIXTURES MUST USE 35 WATT METAL HALIDE LAMPS AND HAVE REMOVABLE COLORED GEL LENSES TO ALLOW TENANTS THE OPTION OF CASTING COLORED LIGHT ONTO THE FLOOR AT THEIR ENTRIES.
5. ALL WIRE ROPE HARDWARE SHALL BE JAKOB INOX LINE OR APPROVED EQUAL.
6. BRAND ID GRAPHICS IS THE PREFERRED FABRICATOR OF THE BANNERS. THE SPECS OF THE SUPERFLEX MESH MATERIAL ARE AS FOLLOWS: ULTRA WHITE, 90Z. DOUBLE SIDED PRINT MESH WITH A FLAT SURFACE (FRONT AND BACK), 1000 DENIER, 80 X 60 LB. TEAR STRENGTH, NFPA-701 FIRE TEST PASS, PRE-WASH - ISOPROPYL 90% 2 SIDES.
7. THE ART MUST BE A MIRROR IMAGE 4" OF FRONT IMAGE TO BACK POCKETS FOR IMAGE TRANSITION WHEN POCKETS ARE FOLDED FOR SEAMING.
8. THE PRINTING PROCESS WILL BE ELECTRO DOT PLACEMENT WITH FULL SOLVENT INK.
9. THE FINISHING WILL CONSIST OF 4" POLEPOCKETS AT THE TOP AND BOTTOM WITH A LEISTER SEAMER 1" SURFACE WELDER AND THE SEAM EDGE MUST BE REINFORCED WITH BANNER STAPLES (1 IN EACH CORNER). THIS SHOULD BE SHIPPED ON A ROLL SO THAT NO FOLDS ARE CREATED IN THE BANNER.



3.3 Typical Letter and Mesh Panel Diagram - Sign Type A and C



JAKOB INOX LINE #30898 VARIBALL MK1.