

## miami airport installation: harmonic convergence by christopher janney



'harmonic convergence' installation by christopher janney, at the miami international airport in florida, USA

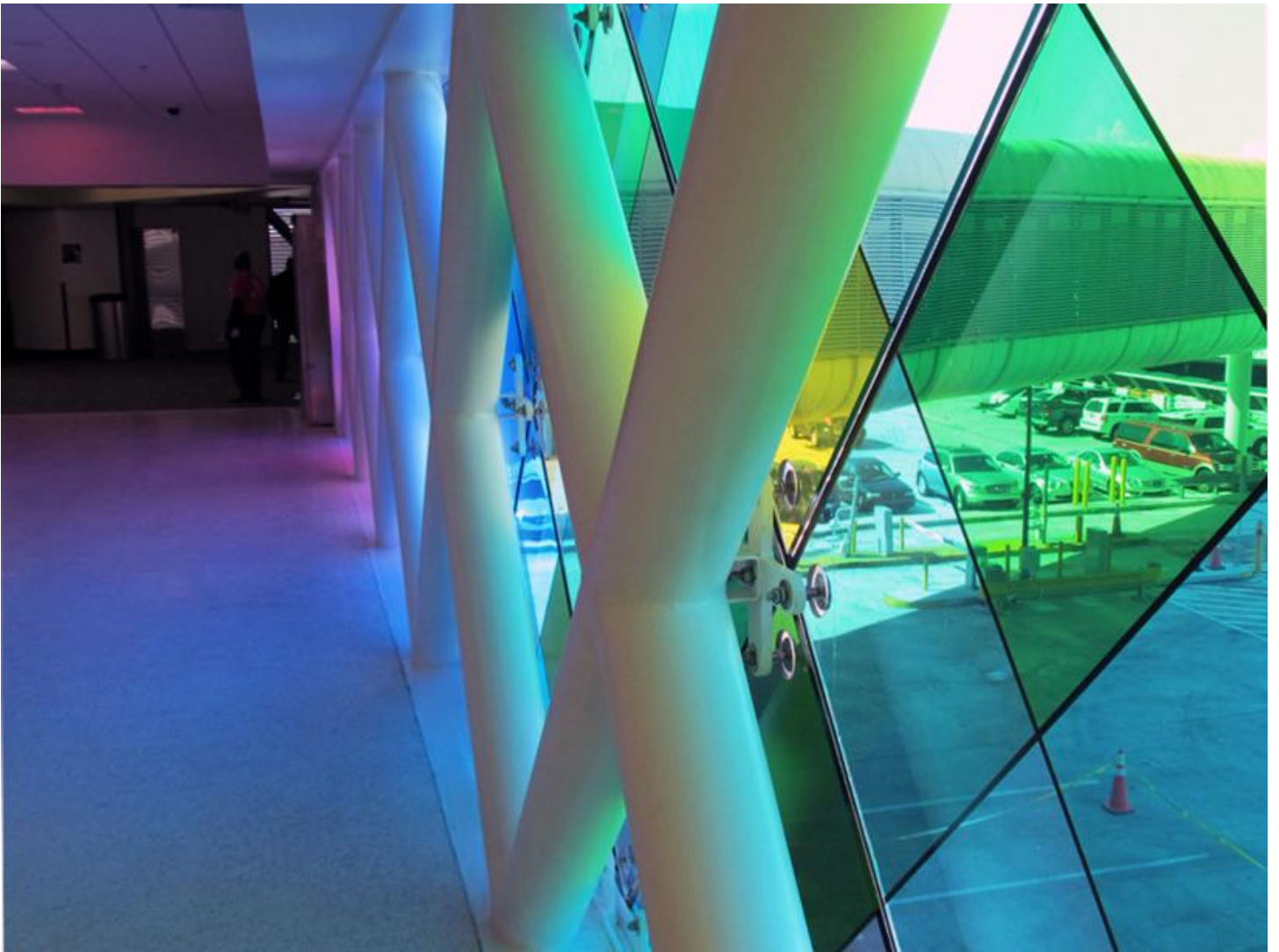
the work of american sound architect [christopher janney](#), '[harmonic convergence](#)' is an interactive sound and light installation, constructed within the pedestrian walkway of the miami international airport in florida. to be officially inaugurated to coincide with [art basel miami beach](#) and [design miami 2011](#) this december, the piece replaces janney's 1997 commission at the airport, 'harmonic runway'.

the work combines light, colour, and sound as it leads passengers from a rental car terminal to the airport proper. speakers installed at regular intervals along the walkway create a continuously changing 'sonic portrait' of south florida as they play the sounds of tropical birds, thunderstorms, and other environments native to the region. video sensors at either end of the passageway track visitor movement, causing changes in the density and composition of the sound piece relative to the number of passengers in the space.



view of the western wall

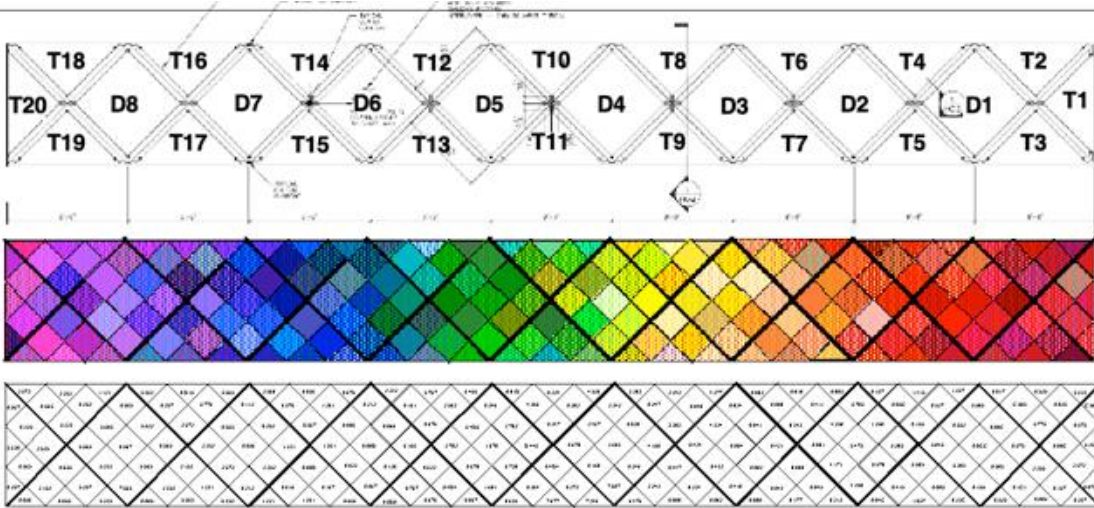




closer view of the coloured glass

the work required that the shading louvers along the passageway's western side first be removed, increasing the light and openness of the space. the existing glass panels were then replaced with coloured glass in a diagonal pattern that mimics the existing X-bracing of the walkway. these columns, along with the floor and ceiling, were painted white to catch the play of colour and sunlight.

to continue the installation's effect during night hours, janney replaced the existing fluorescent lighting with a series of computer-controlled LED lights.



**LOOKING AT GLASS FROM INTERIOR**  
3.27.11

Red-Violet(V)	Violet	Blue-Violet	Blue	Blue-Green	Green	Yellow	Orange	Red	Red-Violet(R)
Red-Violet(V) 0567 2572 0565 2252 5320 0225 2525 5323 0257 0565 2152 0655 0056 0055	Violet 0252 1121 0565 5363 0257 0D15 5565 5685 <b>0567</b> 5522 0565 2572 5257 5233 7565 5565 2353 2152 5235 0005 5565	Blue-Violet 5776 5565 0112 2568 6576 0056 2252 0565 <b>0056</b> 0252 1221 0567 1231 2572 0212 2252 0616 000D 6353 1221 1361	Blue 0246 881D 4266 0224 1678 2782 D446 0247 04D4 0678 1681 6728 0264 04D4 0067 8836 7767	Blue-Green 0282 4526 2242 3283 0247 2242 0678 2467 <b>3683</b> 0028 4168 3283 0272 0168 7687 0246 2242 0447 7246 6476 0008	Green 0048 4377 0824 0082 0008 0818 0424 4324 <b>0004</b> 0041 0431 8343 8224 0433 0418 0083 0043 8888 0082 0088 8177	Yellow 0025 5323 C585 000C 0575 5255 0157 2572 007C 0257	Orange 0527 1357 5585 0017 C585 0525 5845 0552 <b>00CC</b> 000C 0575 5775 0005 5285 0155 0585 01C1 2255 822C 0525	Red 0025 5323 C585 000C 0575 5255 0157 2572 007C 0257	Red-Violet(R) 0025 5323 C585 000C 0575 5255 0157 2572 007C 0257

**PhenomenArts, Inc.**  
Christopher Janney, Artistic Director  
75 Kendall Road  
Lexington, MA 02421 USA  
Ph: 781-862-6413/Fax: 357-3938  
Em: christopher@phenomenarts.com

**PROJECT MGRS:**  
Justin Keith - Construction  
Mark Wong - Software  
P. Carnes - Drawings

**PROJECT ENGINEER:**  
Bliss & Nytray, Inc.  
Structural Engineers

**CONSULTANTS:**  
FRAGA -  
Electrical Engineers  
NOVUM Structures -  
Glazing Design  
Perez&Perez -  
Architects/Engineers  
Canyon Construction -  
General Contractors  
Gas-Pro -  
Glazing Manufacturing

**ISSUES/REV:**

12-14-09	
11-01-10	
3.27.11	

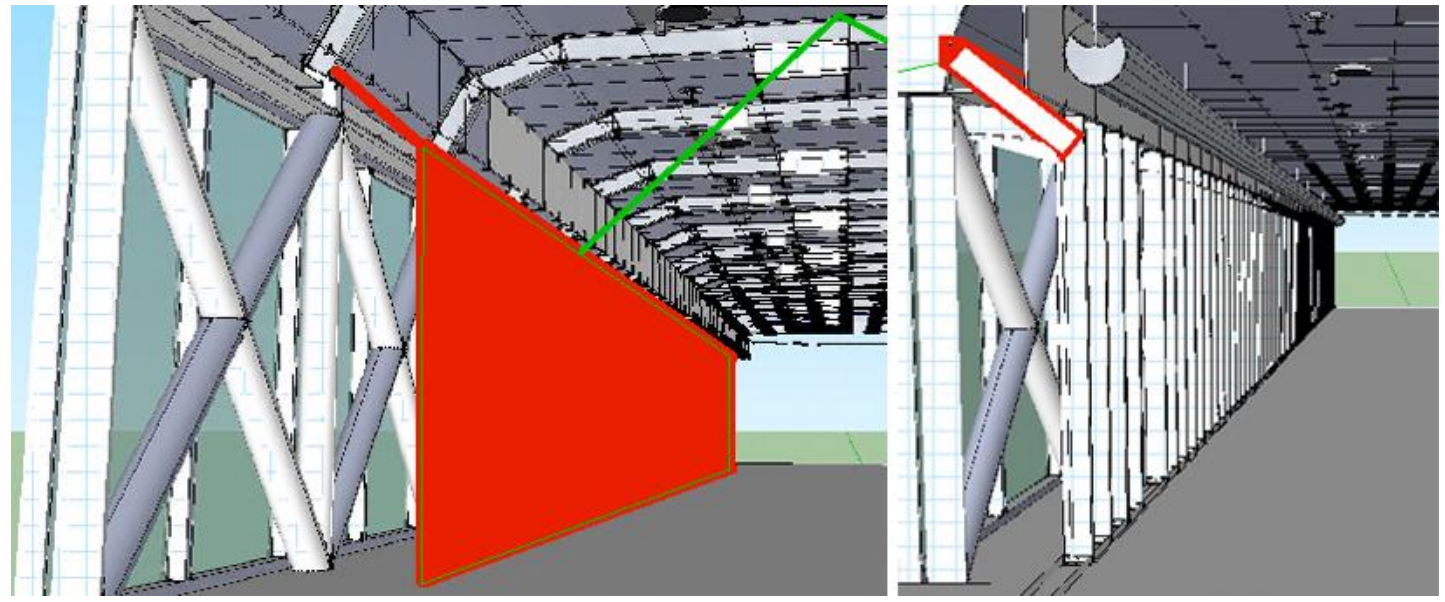
**PROJECT TITLE:**  
HARMONIC  
CONVERGENCE  
Miami Airport, Miami, FL

**SHEET TITLE:**  
Master Color  
Pattern Layout

**SHEET #** 46  
**OF** 46 **SHTS.**

Approved \_\_\_\_\_ Date \_\_\_\_\_

glass placement diagram



construction renderings





left: external view of the raised walkway, prior to the installation  
right: interior view of the space prior to the installation

**Read More:** <http://www.designboom.com/weblog/cat/10/view/17538/miami-airport-installation-harmonic-convergence-by-christopher-janney.html>

| **Email:**  | **Share:**   | **Bookmark and more:**  |  
**Translate:**       



---

**Phone:** 1-305-876-7000 / **Toll Free:** 1-800-TALK-MIA (800-825-5642)  
[Airport Maps](#) | [Driving Directions](#) | [Shopping & Dining](#) | [Site Map](#)  
[Flight Search](#) | [Flight Tracker](#) | [Airline Directory](#)  
[What's New @ MIA](#) | [News Clips](#) | [Home](#)



**Share:**     